

8.0 Password Security System

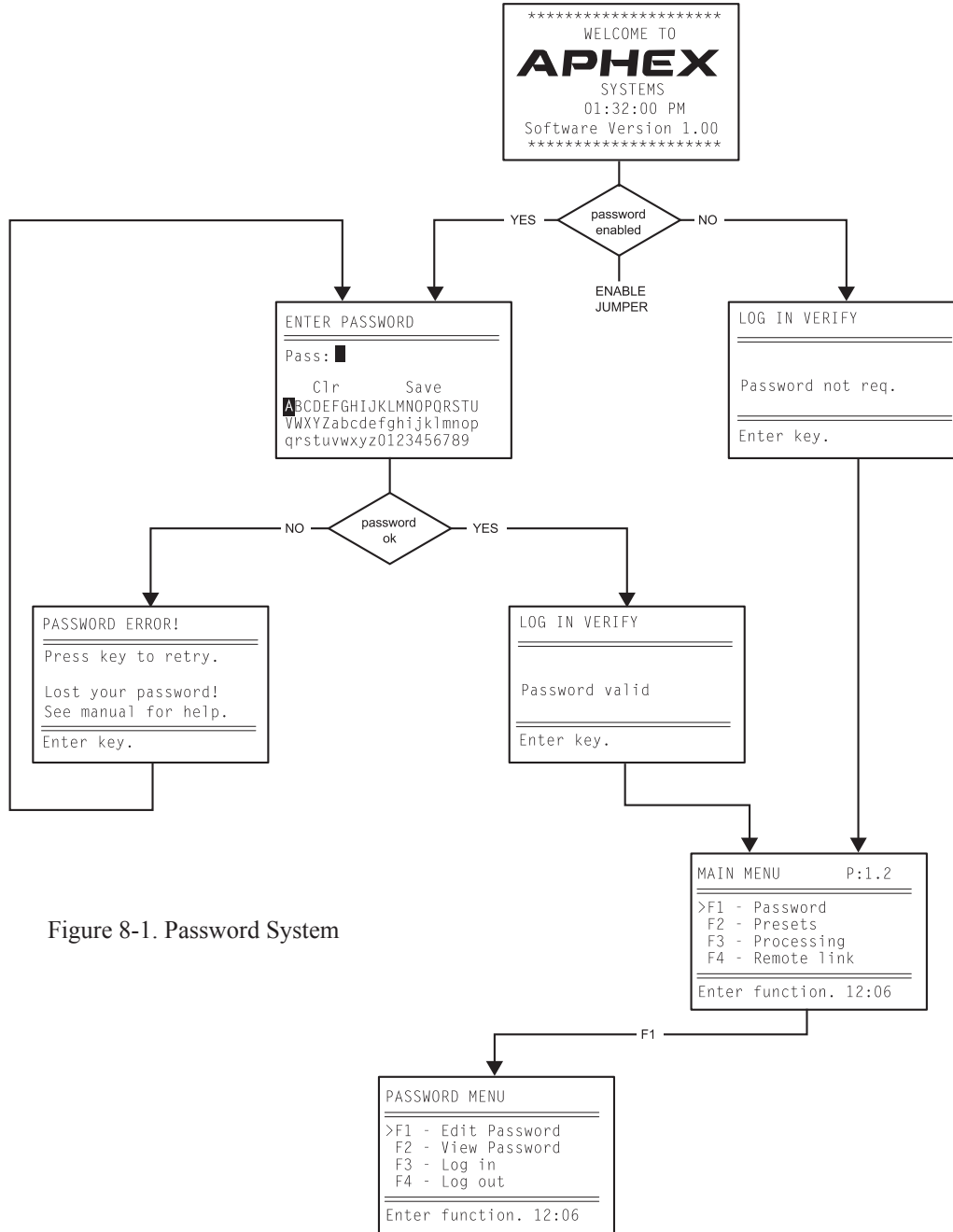


Figure 8-1. Password System

8.1 Why A Security System?

In most modern broadcast installations, it is important to prevent any unauthorized viewing or changing of the processing. This protection is achieved in the Model 2020 when the password security system is enabled. In applications which do not require this password security feature, the password requirement can be disabled.

8.2 Log-in Access

To pass from the logo screen to the main menu you must log in. Pressing the enter or escape key at the logo screen will either prompt you to enter the password or tell you no password is required depending upon whether any password has been set up.

Note: If no password is required, then you will

be notified by the screen and allowed to enter the main menu by again pressing the enter key. If a password has been set, then the password entry screen will be displayed and you will need to successfully enter the password in order to gain entry to the main menu.

8.3 Logging Out

8.3.1 Manual Log Out

After you finish adjusting the FM Pro, you should log out to protect the FM Pro from tampering. This is a simple procedure accessed through the main menu “Password” function. Select “Log Out” and press enter. The logo screen will appear indicating you’re now logged out.

8.3.2 Auto Lock Out

The FM Pro will automatically log you out after a period of inactivity. The period will be either 1 or 5 hours, depending on how it is set in the Main Menu “Display Mode” page. Any front panel operation resets the timer back to zero, so the lock out will not occur unless you remain logged in but leave the unit alone for a long enough period. This is a very handy way of making sure the unit will return to a tamper proof mode should you walk away and forget to manually log out.

Note: We suggest using the 1 hour Auto Lock Out if you are likely to receive frequent work interruptions. During extended uninterrupted sessions, use the 5 hour setting.

8.4 Auto Save

As a convenience to you, the auto lock out feature will also save your current operating parameters to the Auto Save memory U16 when “Auto Save” is enabled. This feature is activated through the same Main Menu “Display Mode” page where you find the Auto Lock Out time.

Note: If the Auto Save feature is set OFF, then the at the instant the Auto Lock Out function logs you out, the FM Pro will revert back to the preset which was in effect at the time you logged in, or the last preset you saved while working. You will lose any unsaved work you did while you were logged in.

If the Auto Save feature is set ON, then at the instant the Auto Lock Out function logs you out, your new settings will be saved to memory U16, automatically named “Auto Save”, and the FM

Pro will revert back to the preset which was in effect at the time you logged in, or the last preset you saved while working. This saves you from losing your work should you forget to save it to your own user preset. You can later come back and retrieve your work from the Auto Save memory.

8.5 Password Enabling

There are two password enable methods in the FM Pro, hardware and software. The hardware enable consists of a movable jumper located inside the FM Pro’s chassis. This jumper is only accessible by removing the top chassis cover. As shipped from the factory, this jumper is set to enable. When the jumper is set to enable, the software enable is active. When the jumper is moved to disable, the software enable is defeated at all times.

8.5.1 Software Password Enabling

Assuming the hardware is enabled, (hardware jumper set to enable) the software enable exists implicitly by setting up a password or deleting the password. If the password is null, i.e., the word is blank, then the password system is software disabled. If a password is set up, i.e., at least one character is entered and saved as a password, the password security system is software enabled and you will thereafter have to enter the password to gain log in access.

8.5.2 Hardware Password Enabling

The hardware password jumper serves two functions. First, it permanently enables or disables the password capability depending on whether it is moved to the enable or disable position. Second, it can be used to reset the password in software to null (blank) by first booting up the unit with the jumper in the disable position and then rebooting with the jumper in the enable position. This jumper is located inside the unit on the front panel computer board assembly.

Note: As shipped from the factory, the hardware password jumper is set to enable, and the password in software is blank.

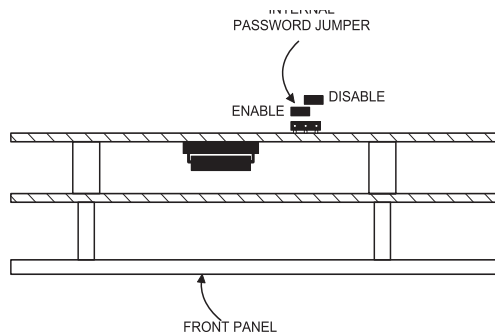
8.6 Access With Lost Password

If, for any reason, you lose the password and are locked out of your FM Pro, you can reset it to null and start over with a new password. Doing this requires somewhat drastic measures, discouraging unauthorized persons from gaining access to your

audio processing. The only way to overcome an unknown password is to clear the password memory using the hardware password jumper as follows.

8.6.1 Clearing The Password Memory

To reset the password to null: remove ac power, take out the the 14 cover screws, and remove the cover. Locate the password jumper on the front panel computer board and move it to the disable position. Apply power and boot up the unit. You should now be able to access the Main Menu without a password. Power down and move the jumper back to the enable position. Replace the cover and restore the unit to operation. You can now enter a new password or operate without a password.



end

Figure 8-2. Hardware Password Jumper

8.7 Setting The Password

Once logged in, you can create a password or change the existing password. Enter the “Password” page from the Main Menu and select “Edit Password”. The password edit screen will appear. If a password exists it will appear in the edit screen. Simply overwrite it and save. If there was no previous password, the edit screen will be blank. Simply enter a new password and save. From now on the new password will be required to log in.

8.8 Clearing The Password

Should you want to clear the password and run without password security, follow the above procedure but overwrite the existing password with blank spaces. Once the blank password is saved, the password system becomes “software disabled” and you will not be asked for a password for subsequent log-ins.

Blank Page